



Jabfloor High Performance (HP) 70 and 100

Floor insulation – perimeter floor

Jabfloor HP is a closed cell expanded polystyrene (EPS) insulation board for use in all floor constructions.

The thermal performance of a floor is determined by the P/A ratio. For floors with a very low P/A ratio such as 0.25 or lower, the floor may be insulated vertically or horizontally around the external perimeter to achieve the required U value.

The Perimeter insulation is generally applied in a 1200mm wide strip. (see installation details)

Jabfloor HP is grey in colour due to the carbon additive which acts within the boards to disperse and reflect heat radiation. This gives the boards an improvement in thermal performance compared to white EPS.

Jabfloor HP insulation has been tested and approved by the British Board of Agrément (BBA) as Jablite Floor Insulation High Performance covering Grades 70 and 100. Certificate number 87/1796 Product Sheet 4.

Available in a range of compressive strengths to suit building types from domestic to commercial.

Jabfloor HP does not degrade when placed in high moisture areas and is resistant to the effects of freeze thaw. Jabfloor HP will remain an effective insulation for the life of the building

Jabfloor HP is lightweight and easy to install. There are no requirements for special PPE when installing or cutting Jabfloor. (full installation details are shown later)



Dimensions

Standard Size	2400 x 1200mm
Standard Thickness	25, 30, 40, 50, 60, 75, 100, 120, 150 and 200mm (Other thicknesses available to order)

Properties :

Grade	Thermal Conductivity (Lambda) (W/mK)	Design load at 1% nominal compression (kPa)	Design load at 10% nominal compression (kPa)
Jabfloor HP 70	0.032	20	70
Jabfloor HP 100	0.032	45	100

More detailed physical properties are shown on our EPS Datasheet.





Application : This information is provided as guidance only, please refer to the Jabfloor compressive strengths table.

Grade	Application
Jabfloor HP 70	Domestic
Jabfloor HP 100	Offices, Special Occupancy Residential (e.g. Care Home)

Accreditation :

BBA	Jabfloor HP Insulation has been assessed and approved by the British Board of Agrément as Jablite Floor Insulation for use below slab in solid ground floors. Certificate number 87/1796. This Certificate covers Grades 70, 100 and 150.
NHBC Approved	NHBC accepts the use of Jablite HP Floor Insulation, provided it is installed, used and maintained in accordance with the BBA Certificate, in relation to NHBC Standards, Chapters 5.1 Substructure and ground bearing floors and 5.2 Suspended ground floors
CE marking	Jablite have taken the responsibility of CE marking the product in accordance with harmonised European Standard BS EN 13163 : 2012. Declaration of Performance is available on Request.
Quality	All Jablite products are manufactured in production facilities which are certified to ISO 9001 Quality Management
Environmental Responsibility	All Jablite manufacturing facilities are ISO 14001 certified. We operate an Environmental Management System which includes our supply chain (see BREEAM section for more information)
Compliance	Jabfloor HP conforms to the required properties as defined in BS EN 13163:2012 – Thermal insulation products for buildings – Factory made expanded polystyrene (EPS) products – Specification. This includes compliance with BS 3837 Part 1
Fire	Solid ground floors are not required to provide fire resistance. When properly installed Jabfloor is fully protected by the concrete slab and will have no adverse effect on the fire performance of the building into which it is installed. Jabfloor is supplied as non-flame retardant material as standard. Euroclass E, flame-retardant material is available to order.





Environment and Sustainability :

A+	Jabfloor HP insulation is manufactured from EPS (expanded polystyrene) which achieves an A+ rating in the BRE Green Guide to Specification.
Climate Change	Jabfloor HP insulation has an ozone depletion potential (ODP) of zero and a global warming potential (GWP) of less than 5. EPS does not create any known risk to the environment
100%	Jabfloor HP insulation is 100% recyclable.
BREEAM	<p>Responsible Sourcing.</p> <p>Jablite insulation products are manufactured in factories which are ISO 14001 and ISO 9001 certified Jablite purchases raw material from suppliers who are ISO 14001 certified. The ISO certificate are in the Technical Resource Centre on the Jablite website www.Jablite.co.uk</p> <p>Key Process (Insulation Manufacture) ISO 14001: Certificate Number EMS 559414</p> <p>Supply Chain Processes (supply of materials for end products) ISO 14001: Certificate Number NL 015213-1</p> <p>Embodied Impact Jablite EPS is manufactured using low energy processes.</p> <p>The calculation of embodied impact relative to thermal performance is a function of the material volume (for each build), its BRE Green Guide Rating and its thermal conductivity.</p> <p>The thermal conductivity of our products is available on both the product packaging and this datasheet</p>
Biological Properties	Jabfloor HP EPS insulation is non-toxic and non-biodegradable. Jabfloor HP will not sustain mould growth and has no nutrient value to insects or vermin.





INSTALLATION

Horizontal-edge insulation

The site hardcore should be blinded level, with a suitable recess provided at the perimeter to receive the Jabfloor HP.

Jabfloor HP should be loose-laid over the prepared surface; all joints should be tightly butted.

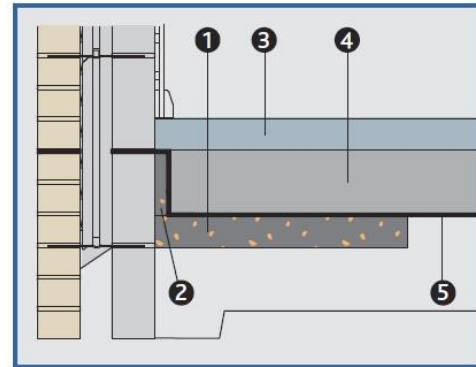
A suitable DPM such as 250 μ (1000 gauge) polythene is installed over the prepared ground or blinded hardcore base.

If the concrete slab is to be poured directly onto the Jabfloor HP, the joints should be covered with 75mm-wide adhesive tape to prevent the ingress of concrete or grout between the boards.

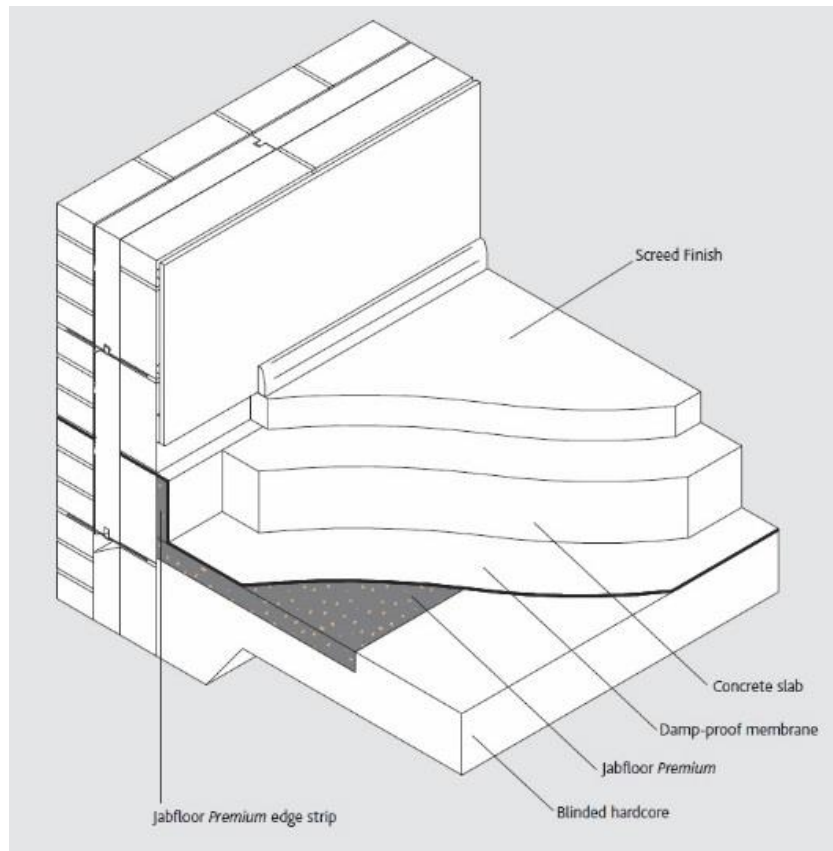
The concrete slab is laid to the required thickness and either tamped or power-floated to provide the required finish.

During these operations, the surface of Jabfloor HP or the DPM should be protected from impact damage or excessive trafficking by the use of spreader boards.

Horizontal insulation



1. Jabfloor Premium
2. Jabfloor edge strip
3. Screed
4. Concrete slab
5. Damp-proof membrane





INSTALLATION

Vertical edge insulation

Vertical insulation is normally installed on the internal face of the foundation walls, and should be placed during construction so that the insulation board is supported on the concrete footings.

The boards should be adequately restrained against the wall during backfilling. A DPM should be placed between the insulation and the ground.

Jabfloor HP 70 grade is generally used for vertical applications due to minimal load on the insulation.

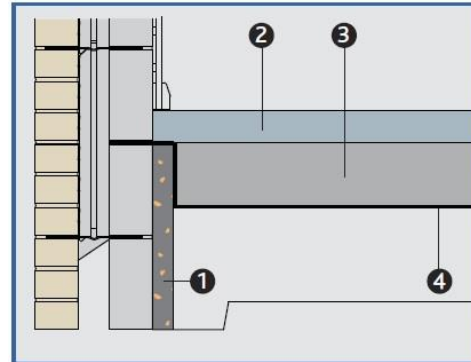
The DPM and insulation should be protected from mechanical damage during backfilling operations and whilst backfilling and when the concrete slab is being poured.

Thermal Bridging

The cavity wall insulation should be continued below the level of the damp-proof course and a vertical upstand of Jabfloor Edge Strip should be used to prevent cold bridging, as detailed in BRE Report 262.

The cavity wall insulation must overlap the top of the Jabfloor HP Edge Strip by at least 150mm to meet the BRE recommendations and reduce the risk of condensation by cold bridging.

Vertical insulation



1. Jabfloor *Premium*
2. Screed
3. Concrete slab
4. Damp-proof membrane

Note: Jablite EPS products are compatible with all common building materials. Direct contact with hydrocarbons and strong solvents should be avoided. A suitable membrane such as polythene sheet may be used to separate Jablite EPS from these substances.