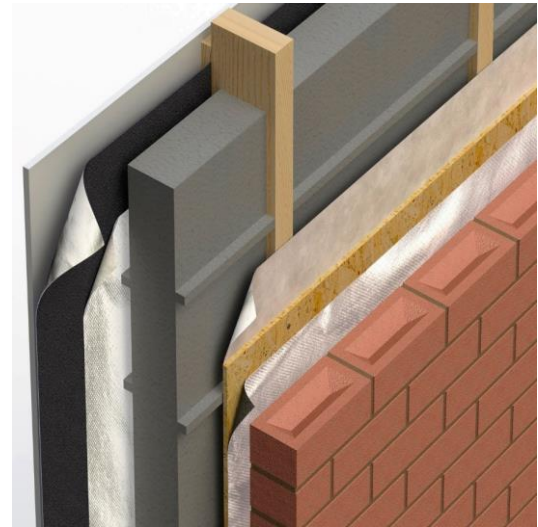




Jablite Timber Frame Wall Insulation

Key benefits

- Lambda from 0.032W/mK
- 100% recyclable
- Easy to install
- Lightweight and easy to handle
- Insulates for the lifetime of the building
- Achieves Fire Class E
- Resistant to moisture
- Durable and rot-proof
- Maintains the cavity
- EPS has an A+ rating in the BRE Green Guide to Specification
- Permanent insulation for the lifetime of the building



Jablite Timber Frame Wall Insulation is manufactured from expanded polystyrene (EPS) and forms part of a wall insulation system used for timber frame construction.

Jablite Timber Frame Wall Insulation Properties

Dimensions

Standard size: 1200mm x 1200mm
Standard thickness: 140mm

Type

Jablite Timber Frame Wall Insulation is supplied as EPS HP 70 E (grey) as defined in BS EN 13163. TFW contains a flame retardant additive to achieve Reaction to Fire Class E. Any necessary fire performance should be provided by the system design.

Easy to install

Jablite Timber Frame Wall Insulation is manufactured from expanded polystyrene (EPS) which is lightweight and easy to handle. It is easily installed and there is generally no need for specialised trades or equipment, therefore disruption to the building occupants is minimal.

Permanent

Jablite Timber Frame Wall Insulation is rot-proof and durable and will remain effective for the life of the building; the recommended fixing methods will retain the boards permanently in position.

Environment

EPS has been awarded an A+ rating by the BRE's Green Guide to specification.

Rapid, economical construction

The boards are available in sizes to suit timber studs and are simply placed into position as construction of the wall proceeds.

Easy to cut and fit

If required, boards can be easily cut to length using a sharp trowel or knife. No specialised trades or equipment are required.

Thermal performance

A U-Value of 0.18W/m²K can typically be achieved with a Jablite Timber Frame Wall Insulation based on a common cavity wall construction using a range of materials for both inner and outer leaf.

Water vapour transmission

Jablite Timber Frame Wall Insulation offers significant resistance to the passage of water vapour, but should not be regarded as a vapour-control layer.





This table includes all the technical information about Jablite Timber Frame Wall Insulation

Description	Comment	Specification
Product Material	Product Description EPS Type Thermal Conductivity Reaction to Fire	Jablite timber frame wall insulation is produced from HP (grey) EPS. The Expanded Polystyrene panels cut from block. EPS Grade 70 Euroclass E EPS 70 – 0.032 W/mK Max Class E – BS EN ISO 13501–1
Thickness	Nominal overall including ribs	140mm
Thickness Tolerance		T2 ±2 mm
Length	Nominal overall	1200mm
Length Tolerance		L2 ±2 mm
Width	Nominal overall	1200mm
Width Tolerance		T2 ±2 mm
Flatness		P5 ±5 mm per metre run
Packaging	Sizes 140 mm O/A	





U-Value Summary

Typical wall construction with brick on the outer leaf and plastering on the inner leaf.

Wall 1 construction build-up:	
Brick	103mm
Airspace	50mm
Low emissivity surface *	-
Oriented Strand Board (OSB)	9mm
Low emissivity surface/membrane*	-
Airspace – heat flow horizontal	20mm
Jablite Timber Wall Insulation	100mm
Airspace – heat flow horizontal	20mm
Low emissivity surface/membrane*	-
Gyproc Wallboard	12.5mm
Gypsum Plastering	3mm

* Emissivity value $\epsilon \leq 0.003$

U-Value	Jablite – Timber Frame	Jablite EPS 0.032 m2K/W
0.21	100mm	-
0.18	100mm	25mm
0.17	100mm	30mm
0.16	100mm	40mm
0.15	100mm	60mm
0.14	100mm	75mm
0.13	100mm	90mm
0.12	100mm	100mm





Typical wall construction with oriented strand board on the outer leaf and plastering on the inner leaf.

Wall 2 construction build-up:	
Oriented Strand Board (OSB)	9mm
Airspace	20mm
Heat flow horizontal	20mm
Low emissivity surface/membrane*	-
Jablite Timber Wall Insulation	100mm
Airspace – heat flow horizontal	20mm
Low emissivity surface/membrane*	-
Gyproc Wallboard	12.5mm
Gypsum Plastering	3mm

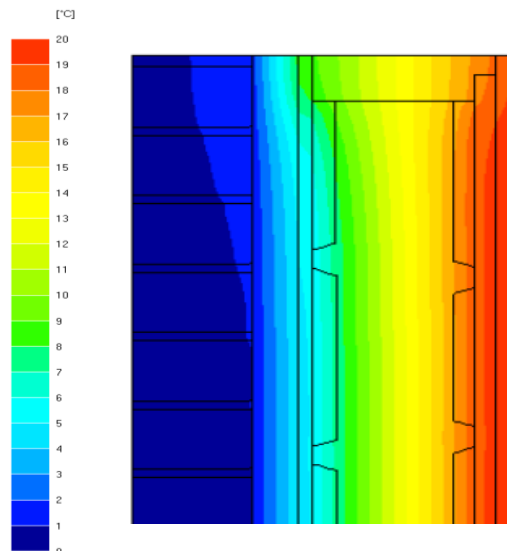
* Emissivity value $\epsilon \leq 0.003$

U-Value	Jablite – Timber Frame	Jablite EPS 0.032 m2K/W
0.25	100mm	-
0.21	100mm	25mm
0.20	100mm	30mm
0.19	100mm	40mm
0.17	100mm	60mm
0.16	100mm	75mm
0.15	100mm	90mm
0.14	100mm	100mm

Accessory Product – low emissivity membrane

Timber frame construction requires both a breathable membrane on the outer sheathing of the panel, which also provides temporary protection against the elements and vapour control layer on the internal side of the panel.

Jablite Timber Frame Wall Insulation is a high performance insulation board that is designed specifically to increase the thermal performance of the wall by the combination with a low emissivity insulating breather membrane on both sides of the EPS board.



Temperature change diagram

